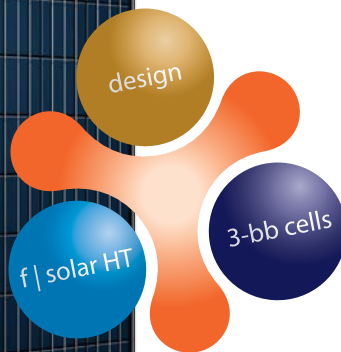




Scheuten® Solar Module Gold Line

Multisol® P6-60



Multisol® P6-60 Gold is a new extension of the Multisol® range of high quality German made modules, designed and produced for a wide range of applications. Its aesthetics, high performance and high energy yield make it extremely suited for the residential segment. Based on over 20 years of experience Multisol® modules are characterized by their long service life, above average yield and excellent workmanship. The quality, output and reliability of Multisol® modules make them extremely cost-effective and represent a solid investment for the future.

Multisol® P6-60 Gold is a new product in the Scheuten Solar range:

- Aesthetic design by using a black frame in combination with a black foil
- Improved energy yield thanks to f | solarfloat HT glass (quartz hard AR coating)
- High power by integrating high quality 3-bb cells

The performance of the Gold Line matches best-in-class in the industry. The module is equipped with our sturdy ProFix black anodized aluminium frame for easy mounting and our ProConnect IP65 Junction box with its patented connection system.

Multisol® P6-60 Gold is manufactured in Gelsenkirchen (Germany) on one of the most modern module production lines in the world. This guarantees the highest quality available in the market of which leading warranty conditions are the result.



Characteristics of Multisol P6-60 Gold Line at a glance

- Power range 230 - 240 Wp in 5 Wp steps
- Power tolerance + 0 / + 10 Wp
- Made in Germany
- 25 year power output warranty, 10 year product warranty
- ProConnect® IP65 Junction box with patented connection system
- Very rigid ProFix® black anodized aluminium frame with hollow chamber
- Quality management ISO 9001
- Environmentally friendly production according to ISO 14001
- Scheuten Solar is a member of PV Cycle



Typical Data at Standard Test Conditions (STC)

Module Type P6-60 Gold Line			230	235	240*
Nominal Peak Power	P _{mpp}	[Wp]	230	235	240
Power Tolerance + 0 / + 10 Wp					
Power density		[Wp/m ²]	139	142	145
Peak Power Voltage	V _{mpp}	[V]	29,4	29,5	29,6
Peak Power Current	I _{mpp}	[A]	7,84	7,97	8,10
Open Circuit Voltage	V _{oc}	[V]	36,8	37,1	37,4
Short Circuit Current	I _{sc}	[A]	8,28	8,32	8,36
Module efficiency reduction @ 200 W/m ²			-0,8% Abs.		

STC: Standard Test Conditions; 1000 W/m², 25°C, AM 1,5

* powerclass limited available

Typical Data at Normal Operating Cell Temperature conditions (NOCT)

T _{NOCT}	44°C				
Peak Power	P _{mpp}	[Wp]	167	171	175
Peak Power Voltage	V _{mpp}	[V]	26,9	27,0	27,2
Peak Power Current	I _{mpp}	[A]	6,23	6,33	6,44
Open Circuit Voltage	V _{oc}	[V]	34,4	34,7	35,0
Short Circuit Current	I _{sc}	[A]	6,71	6,74	6,77

NOCT: Irradiance level 800 W/m², spectrum AM 1,5, wind velocity 1 m/s and ambient temperature 20°C

Thermal Characteristics

Temperature Coefficient I _{sc}	TK I _{sc}	0,07	[%/K]
Temperature Coefficient V _{oc}	TK V _{oc}	-0,34	[%/K]
Temperature Coefficient P _{mpp}	TK P _{mpp}	-0,48	[%/K]

Measurement tolerances P_{mpp} @ STC ± 5% all other electrical parameters ± 10%

Tested Operating Conditions

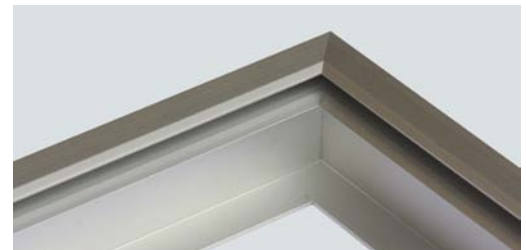
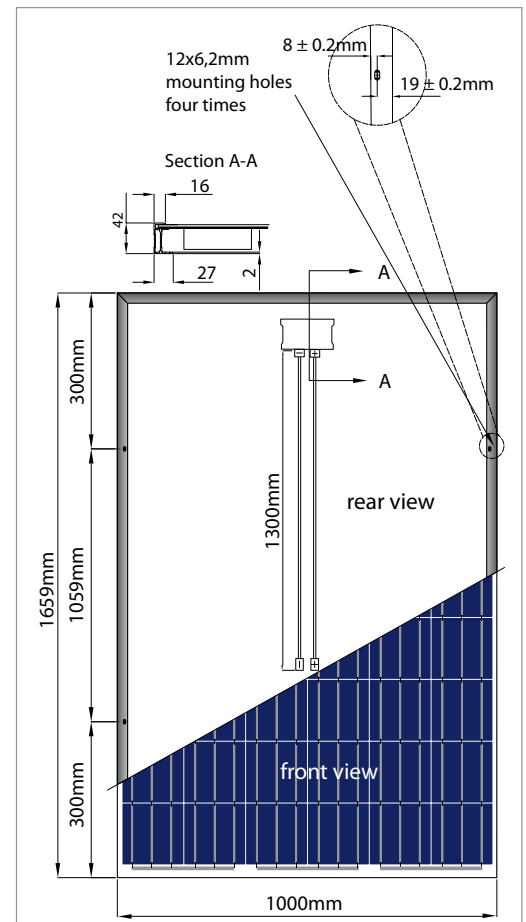
Temperature	-40°C to 85°C
Max Load	5400 Pascal front and 2400 Pascal back

Mechanical and System Design Data

Dimensions H x W x D	1659 x 1000 x 42 mm
Weight	22 kg
Maximum system voltage	1000 V
Limiting reverse current I _r	15 A
Cells	60 x 6" poly crystalline
Frame	ProFix® black anodized aluminium frame with hollow chamber
Glass	4 mm highly transparent low-iron tempered safety glass
Junction Box	ProConnect® IP65 Junction Box with patented connection system and 3 bypass diodes
Cabling	2 x 4 mm ² cabling with NBZH PV-ZH202 connectors

Warranty and Certifications

Warranty	25 year power warranty, 10 year product warranty For details see our Warranty conditions
Certificates	IEC 61215 ed.2, IEC 61730 Application Class A



This datasheet is not legally binding. Actual specifications and/or product features may deviate.
Caution: Read Safety and Installation Instructions before using the Product. Visit our website for more details.